



**30 Sept
2008**

Charlie Frew

This week's guest speaker is Charlie Frew, a hard working businessman with companies on the North Shore and South Coast.

He is committed to local charity work, with extensive involvement in:

- Youth Suicide Prevention;
- the Hartley Lifecare Challenge - supporting people with physical and complex disabilities;
- Multiple Sclerosis;
- Canteen; and
- The Bowel Cancer & Digestive Research Institute Australia

Charlie's involvement in cancer charities commenced with his work with Canteen in the late 1980s and early 1990s. He is a Director of the Bowel Cancer & Digestive Research Institute Australia.

Charlie was the architect of the Institute's "It's Crunch Time" health in the workplace campaign and facilitates bowel cancer seminars to raise awareness of the disease.

The It's Crunch Time campaign has been used by the Australian Government Department of Health & Ageing to promote participation in the National Bowel Cancer Screening Program.



NEXT WEEK:

On 7th October we will be holding our annual Ethics Hypothetical - details in special update.

ROTARY – People like you and me

WHY JOIN ROTARY?

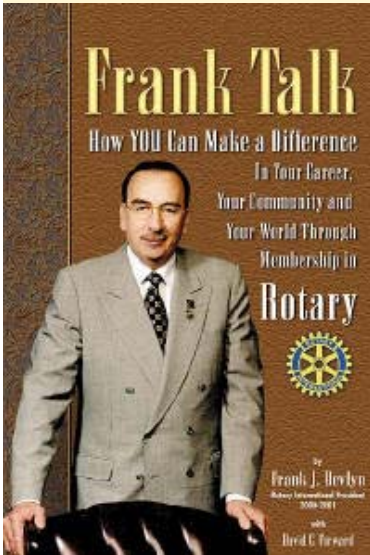
"For those who want to feel connected, Rotary helps give us a sense of community.

For those wishing they

could expand their business contacts, Rotary offers unbeatable networking opportunities. For those who are lonely, it is a wellspring of friendship and support. For those on the fast track, it provides tools and opportunities to help you become a better leader.

For those who love to travel, it's like pulling into a strange town almost anywhere on earth and finding the welcome light illuminated on the front porch."

Frank J. Devlyn,
Past World President,
Rotary International



Who would have guessed these two Sydney Swans fans are actually Austrian Youth Exchange students! (Yes that's our Johanna on the right!)

Do you and your family enjoy an interesting Aussie cultural or sporting activity that you'd like to share with our exchange student?

Why not invite Johanna along! You can contact Johanna through Rotarian Lynn Ralph, lynn@cameronralph.com.au

THE ROTARY CLUB OF SYDNEY

OUR 2008/2009 BOARD

Patricia Harrison President	pharrison@intersuisse.com.au
John Given President Elect	jgiven@zions.com.au
Taine Moufarrige Vice President	taine@servcorp.com.au
Geoff Wilbow Vice President	geoff.wilbow@fiducianfs.com.au
Garry Browne Past President	GBrowne@stalex.com.au
Jean Elborn Honorary Secretary	jeanelborn@bigpond.com
Craig Douglas Honorary Treasurer	cdouglas@cada.com.au
Ann Burleigh Fellowship/Events Director	annburleigh@ozemail.com.au
Ian Conley International Director	iconley@bigpond.net.au
Harry Fox Membership Director	harryfox@wilsonlearning.com.au
Tony Benner Public Relations Director	pr@corpfocus.com.au
James Allen Service & Awards Director	j.allen@stantonchase.com
Indy Singh Youth Director	indysingh@fiducian.com.au

Rotary's 4-Way Test

It asks the following four questions:

"Of the things we think, say or do:

1. Is it the TRUTH?
2. Is it FAIR to all concerned?
3. Will it build GOODWILL & BETTER FRIENDSHIPS?
4. Will it be BENEFICIAL to all concerned?"

Christine Dunstan Productions invites members to morning tea to be introduced to INSIDE OUT.

This is a ground breaking new Australian drama exploring the impact of mental illness on a mother and her son. This event will be held between 11am and 12:30pm on October 9 at the Seymour Centre.

Please contact Patricia Harrison if you are interested in attending.

What's for lunch this week:

Hot: Chicken cordon bleu on garlic mash served with tarragon sauce
Dessert: Strawberry cheesecake
Salad: Duck spring rolls served with mixed salad
Vegetarian: Capsicum stuffed with couscous on tomato basil coulis

AROUND THE CLUB

with Ann Burleigh

The ever generous **Garry Browne** donated two Conference packages for Auction. Acting Sergeant Ann B. invited bids from \$150 and finally secured **\$500** – proceeds to YoungCare. The equally generous **Roslyn McLeod** made the winning bid. [*Hashim helped to up the ante*].

Geoff McIntyre made an impassioned plea to members to "support our President and make a good showing at the Conference". He particularly encouraged newer Rotarians to attend to get a feel for the wider world of Rotary by representing Sydney Rotary Club at the event.

'LOVE HAS NO LIMITS' is indeed a truism as told by our Guest Speaker **Tania Hayes**. She unfolded such a compelling story that, at question time, no one present could bring themselves to speak. She is one articulate and gutsy lady! Her husband Warren, is an extraordinary survivor. Those who missed Tania and Warren's presentation, can check out their web-site

www.taniahayes.com.au. It is salutatory to be reminded that full-time carers like Tania, save the Government a collective \$30.5 billion per annum – and receive just over \$20,000 pa as a carer's allowance.

Rod Rate needs to be fined. For anything really. But especially for his interpretation of 'it'.

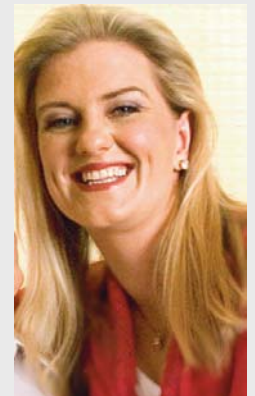
Sophie Dillon has again lent her professional expertise to the re-location of the Club's archives. Thanks Sophie.

Mike Hodgetts thrived at Oxford but succumbed to a particularly nasty All Black bug on a recent NZ visit. Best wishes for a speedy recovery Mike.

Happy birthdaywishes to the end of the month to to **Janette Parkinson, Craig Douglas and Tony Benner**.

Please send us your news or news of your fellow members. Just email

rotarymatters@people.net.au and type away!



Coming Up!

- 7 Oct Luncheon - Ethics Hypothetical debate
- 14 Oct Luncheon - Tony Lund, Disability Services Australia - Challenges in 21st Century
- 17-19 Oct **District 9750 Conference, University of Technology Sydney.**
- 21 Oct Luncheon - Helen Grasswill, Producer "Australian Story"
- 28 Oct Luncheon - Diana "Bubbles" Fisher, "Behind the scenes on royal occasions"
- 28 Oct **Rotary Means Business, 6pm - 7:30pm, 2nd Floor, Castlereagh Hotel.**
- 11 Nov Luncheon - Caltex Teachers Awards
- 18 Nov Luncheon - Judith R. Fergin, US Consul General
- 18 Nov **Art Show Cocktail Party - Wentworth Gallery**
- 25 Nov Luncheon - Indy Singh on the Indian Economy.
- 2 Dec Luncheon - Mt Eliza Presentation
- 16 Dec **Christmas Dinner**

Please transfer these dates to your PDA or Diary.



Our picture shows President Patricia Harrison with a roomful of Ambassadorial Students and Rotary District officers after a very pleasant dinner at her home overlooking Circular Quay.

Four Ambassadorial Students have decided to participate in a bike ride from Sydney to Canberra to raise funds for the Australian Rotary Health Research Fund (ARHRF).

The riders leave Sydney on 8th October and expect to reach Canberra four days later. Please contact President Patricia if you would like to support the group.

MAKE-UPS

If you visit another Rotary Club or related meeting, please make sure you email Membership Director Harry Fox with the details - harryfox@wilsonlearning.com.au

The Rotary Club of Sydney meets every Tuesday at 12:30pm, Cello Room, 4th Floor, Castlereagh Hotel, 169 Castlereagh Street, Sydney.

Rotary District 9750, Club # 18206, chartered 1st May 1921

The Rotary Club of Sydney, GPO Box 1523, Sydney, NSW 2001, Tel. +612 8014 8073

Rotary wheels keep turning ... for 84 years

It's amazing how one slim volume can excite a lot of interest from a variety of sources. To wit, the 1924 Boy's Week Exhibition programme, from our Club's first major community service project.

The booklet came to us from Wagga Wagga Rotary Club via their immediate past Secretary Philip Cross. It had turned up, in pristine condition, at their fundraising Book Fair.

In turn, President Patricia and the Board agreed to send a \$50 cheque as a 'thank you' and also to invite Sarah Ison from the Boys and Girls Brigade to join us for Lunch to view the latest addition to our Club's archives. Sarah came and brought along some related memorabilia that had our honorary archivists very excited.

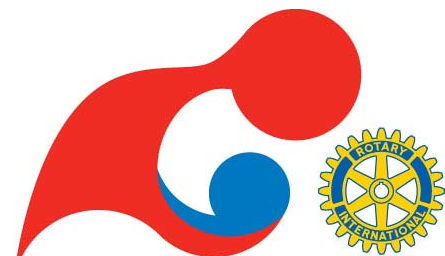
We shared our new found treasure with Alan Tasker, a field Librarian from the State Library - he too, was excited by the 'find'. The book has now been assigned, with a significant portion of the Rotary Club of Sydney Archives, to the NSW State Library for preservation into the future.

More from the Archives later.
Ann Burleigh

How are we doing?

Attendance for August: 34%

Members as at 31 August - 148



Make Dreams Real

Please send your news to the Bulletin Editor,

Tony Benner at Tel. 9279 0261.

rotarymatters@people.net.au